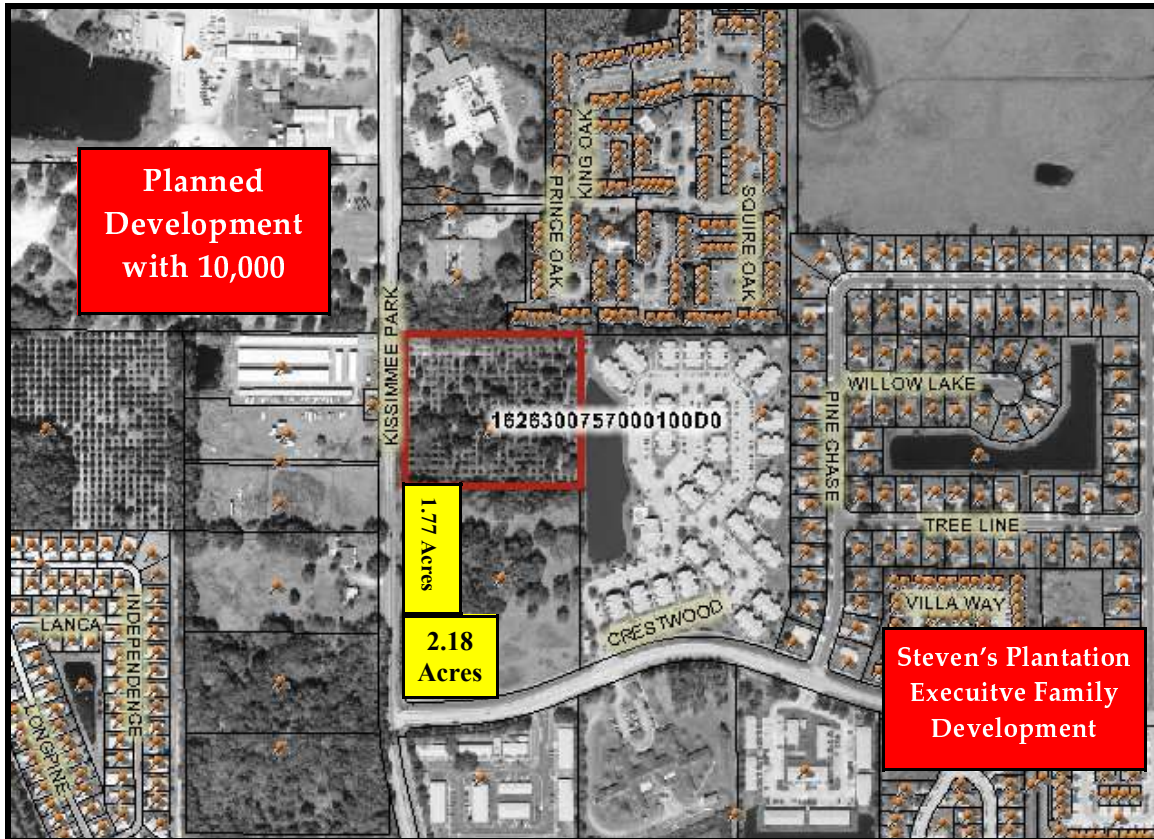


# The Villages at Kissimmee Park Road Pad Sites Available-St. Cloud



## Features:

- Located on Kissimmee Park Road
  - Main Artery to New Turnpike Exchange and Highway 192
- Two pad sites available:
  - 2.18 acres - 320' road frontage
  - 1.77 acres - 428' road frontage
- Adjacent to Steven's Plantation a 525-acre development that will include 600 executive-style homes and commerce park

## Demographics:

- Population 5-mile radius:  
**127,905**
- Average Household Income:  
**\$55,658**
- Planned developments in the area with more than:  
**10,600 new homes**

Schoolfield Properties, Inc.  
101 Park Place Blvd., Suite 3  
Kissimmee, FL 34741

Phone: (407) 847-3099

Fax: (407) 847-2850

Email: [schoolfield@schoolfieldproperties.com](mailto:schoolfield@schoolfieldproperties.com)

Locally Owned and Managed by:



SCHOOLFIELD PROPERTIES